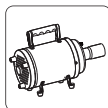
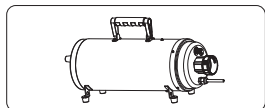


AEOLUS[®]
Professional Pet Drying Equipments Supplier



H-901T



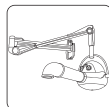
H-900XT



H-903



H-904S



H-905



H-906



H-907

Distributor Contacts



AEOLUS[®] AEOLUS INTERNATIONAL HOLDING LIMITED

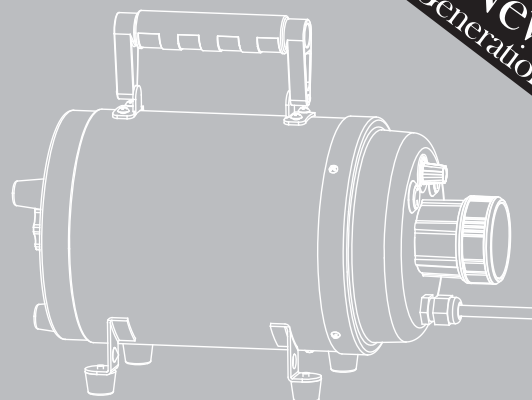


AEOLUS[®]

CYCLONE

PET DRYER

H-900T/901T/902T



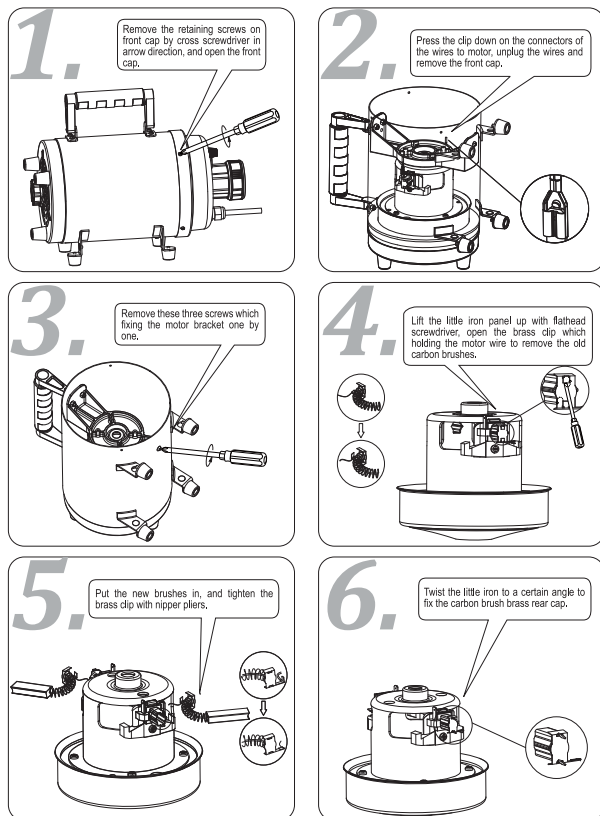
*New
Generation*

Owner's Guide

Ace Class Wind Speed
Excellent Blow Force
One-click Easy Operation
Long-lasting Carbon Brush & Motor
Ultra Low Noise
Save Energy and Eco-friendly

Pro *for* **Pros**

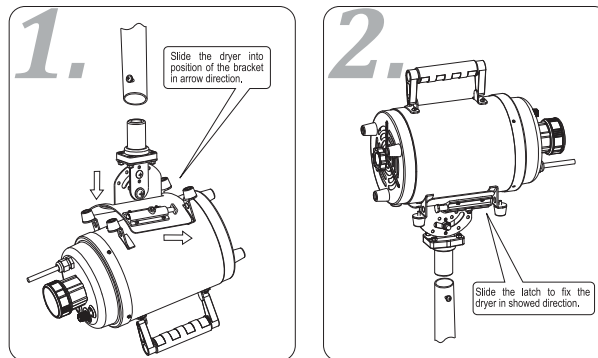
Carbon Brush



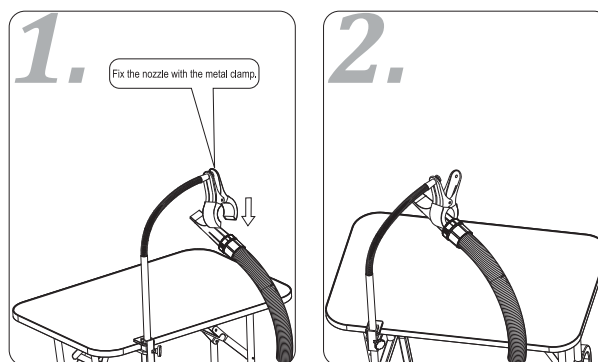
Put all the parts back in reverse order.

※ The power supply must be cut off before changing carbon brushes.

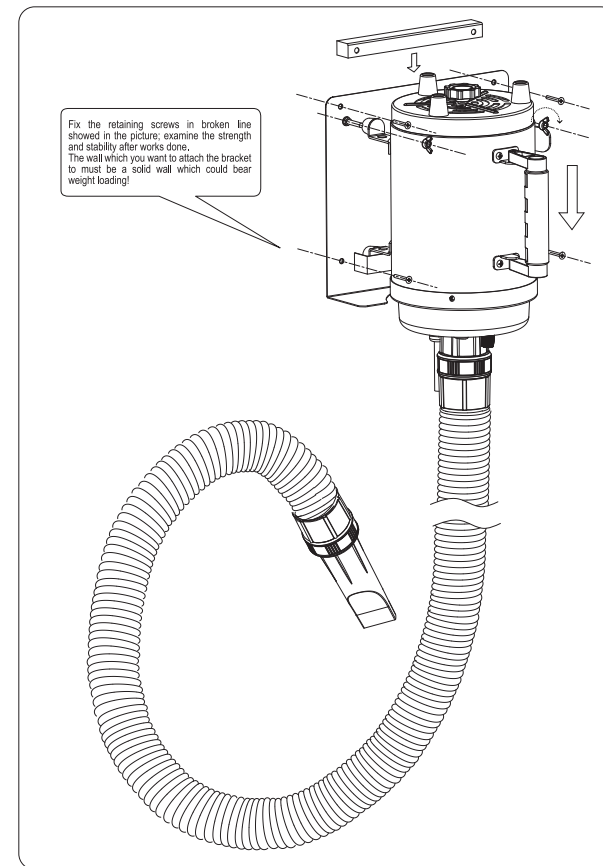
Dryer Stand



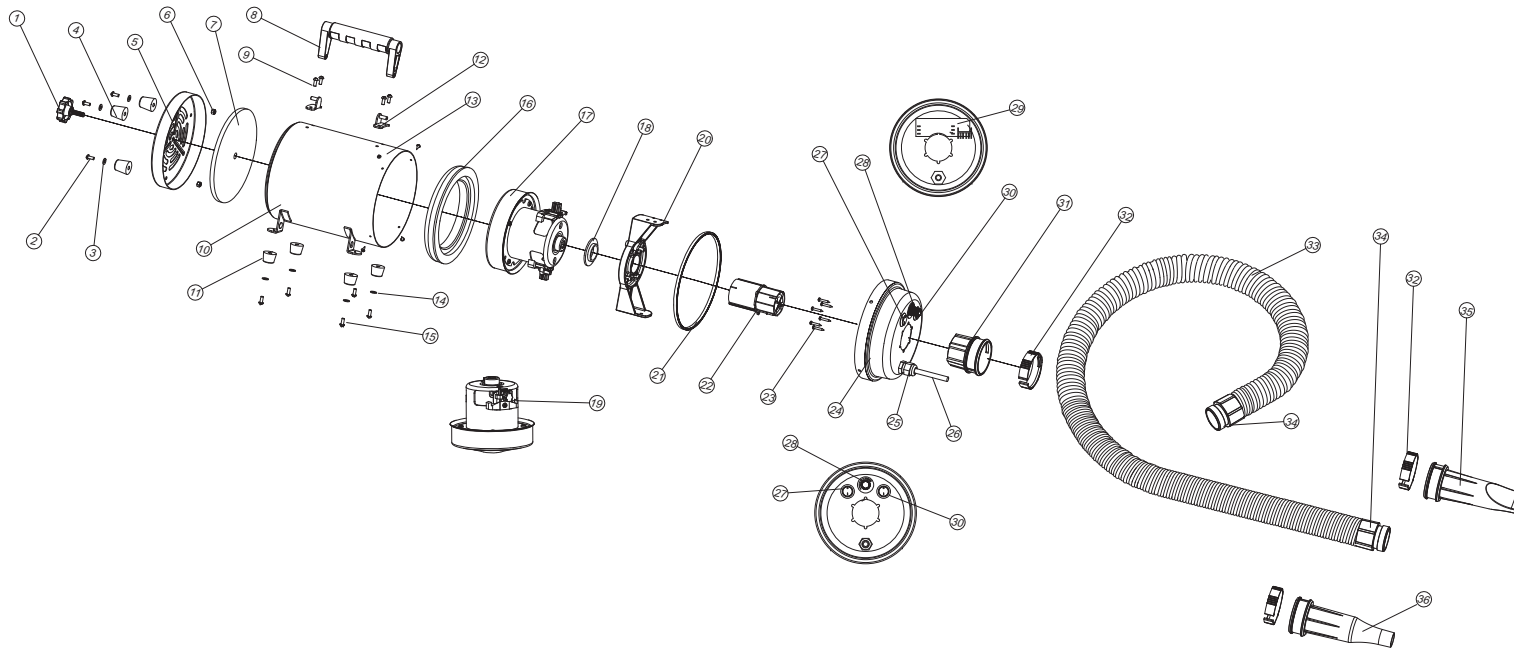
Groomers Third Arm



Wall mounting Bracket



Structure Chart



Remarks: The chart is only for repair parts order references, the real structure should be subject to current available product, since we may make modifications without notice in formal written form.

| Serial No. | Item No. | Part Name | Quantity |
|------------|----------|---------------------------------|----------|
| 1 | TD-90001 | Rear Cap Fixture Knob | 1 |
| 2 | TD-90002 | M4×10 Screw | 3 |
| 3 | TD-90003 | Washer | 3 |
| 4 | TD-90004 | Rear Cap Rubber Foot | 3 |
| 5 | TD-90005 | Rear Cap | 1 |
| 6 | TD-90006 | M4 Lock Nut | 3 |
| 7 | TD-90007 | Foam Filter | 1 |
| 8 | TD-90008 | Handle | 1 |
| 9 | TD-90009 | M4×12 Screw and Nut | 5 |
| 10 | TD-90010 | Short Housing | 1 |
| 11 | TD-90011 | Housing Rubber Foot | 4 |
| 12 | TD-90012 | Handle Set | 2 |
| 13 | TD-90013 | PA3×10 Self-tapping Screw | 4 |
| 14 | TD-90014 | Washer | 4 |
| 15 | TD-90015 | M5×10 Screw | 4 |
| 16 | TD-90016 | Vibration Absorber Ring | 1 |
| 17 | TD-90017 | Motor | 1 |
| 18 | TD-90018 | Rubber Washer | 1 |
| 19 | TD-90019 | Carbon Brush | 2 |
| 20 | TD-90020 | Single Motor Fixture Bracket | 1 |
| 21 | TD-90021 | Rubber Seal | 1 |
| 22 | TD-90022 | Heating Element Assembly | 1 |
| 23 | TD-90023 | PA3×16 Self-tapping Screw | 6 |
| 24 | TD-90024 | Front Cap -A | 1 |
| 25 | TD-90025 | PG-9 Waterproof Cable Connector | 1 |
| 26 | TD-90026 | Power Cable | 1 |
| 27 | TD-90027 | Heating Switch | 1 |
| 28 | TD-90028 | Wind Speed Knob | 1 |
| 29 | TD-90029 | PCB-A | 1 |
| 30 | TD-90030 | Power Switch | 1 |
| 31 | TD-90031 | Front Cap D52 Hose Connector | 1 |
| 32 | TD-90032 | D52 Nylon Clip | 3 |
| 33 | TD-90033 | D52 Flexible Hose | 1 |
| 34 | TD-90034 | D52 Hose Connector | 2 |
| 35 | TD-90035 | D52 Narrow Nozzle | 1 |
| 36 | TD-90036 | D52 Round Nozzle | 1 |

What makes CYCLONE dryer the best one in the world?

It is our goal at AEOLUS, to ensure that we are the partner of choice for all your requirements in the pet industry, AEOLUS is committed to bringing you cutting edge technology at affordable pricing, so that all your needs are met.

At Aeolus we have studied all the available dryer choices in the market and understand that there is a great need for a machine that has a stronger blow force, which currently is not available on the market. The blow force is a more important parameter than just the wind speed, or air volume, and so we have introduced another element which is the blow force and that allows for a higher performance of the product. Aeolus feels that the blow force parameter is a more important indicator of performance because just high wind speed does not reflect a high performance of any machine, the blow force is a critical factor, and so we are proud to bring to your machine this additional feature, which is currently not available in any other machine on the market.

Aeolus model H-901 was the original model, and now we introduce this high performance model which is H-901T, higher blow force, higher wind speed, lower noise, longer life span, more durable, and easier to operate and maintain.

Super Blow Force

After 5 years of continuous research we have launched the new 52mm diameter hose system. This is a much wider hose than previous models which was only 40mm, thus giving the user a higher blow force of 605grams^[1], which is an increase of 45%, and an unmatched wind speed of 60meters per second^[2] which is an increase over previous models by 40%. In order to enhance the blow power we have engineered the air intake vent by three times, and all of these factors now allow an even and stronger flow of air.

Energy Savings

A better air flow system and a smaller flow friction force, has allowed AEOLUS H-901T to perform at a higher energy efficient ratio.

According to test results the H-901T, 1200 watt motor, outperforms a 1600 watt dryer currently on the market.

AEOLUS H-901T will allow for a 30% savings in energy consumption.

Motor Life Span

AEOLUS H-901T will allow for a much extended product life span, based on the following points: Longer carbon brush, improved from 32mm to 38mm, the longest currently on the market. Smaller carbon pellets and a smoother rotor technology, creates smaller sparks which gives the H-901T a longer life span by 30% compared to the previous model.

The result of this new motor technology will give the user 800 hours for one pair of carbon brushes, and can be changed an additional two times, to give a total performance time of 2,400 hours.

After much research and development, AEOLUS technology has greatly improved the carbon brush spring, which prevents the spring from damaging the motor and in turn insures a longer life span of the product.

Maintenance

AEOLUS H-901T has improved the component parts of the motor so that, there is a more efficient way to open the housing of the machine, allowing for easy removal of all electrical components. H-901T clip replacement technology in the motor, allows for a quicker and easier replacement of the carbon brush, and all component parts.

Noise Performance

Advanced metal stretching technology in the H-901T, has eliminated all welded seams, on the front and rear caps of the machine, as well as the main housing, leading to a fully sealed housing, thus reducing the noise emitted from the machine.

Test results show at the highest wind speed the noise emitted from the H-901T is 83 decibels, compared to the current industry standard of 100 decibels, a 20% reduction, which allows the user a more comfortable sound level and performance of the product.

Safety Performance

The USA produced temperature switch, cuts the heating element of the H-901T in 25ms, and begins working again after the core temperature of the heating element reduces to 85 degrees, Celsius, which allows the H-901T to perform at an output temperature of a maximum of 52 degrees Celsius^[3].

H-901T offers, high temperature resistant silicone wires, high temperature resistant switch and circuit boards, and emergency cut off switch for an overheated motor, and durable grounded wires allow for the safest usage performance on the market.

Ease of Use

Aeolus H-901T has patented an easy use nozzle attachment which allows the operator to remove the nozzle head with the use of just one finger, with a simple click of the attachment.

Aeolus H-901T patented nozzle allows reattachment of nozzle head with just one click.

Accessories

AEOLUS H-901T has designed multiple items for dual purpose use of the machine:

Wall mounting bracket

Groomers' third arm

Dryer Stand

Please check instruction manual for further details

Testing Condition:

1)2,5m long flexible hose, Φ16mm round nozzle, fixed above the high precision electronic scale at 220mm, record the blow force indication.

2)2,5m long flexible hose, Φ16mm round nozzle, fixed at the distance of 180mm to the center of wind cup, record the wind speed indication.

3)52℃ means the sensor fixed at the position of 3cm away from the end of round nozzle never takes a value higher than 52℃ in a 3 hours continuous testing, when the environmental temperature is at 32℃.

Remarks: all the testing is executed on professional testing platforms.

Direction for Use

1. Plug the flexible hose to the front cap connector.
2. Plug in socket with right voltage, switch power on.
3. Adjust wind speed, turn on or off the heating switch and choose suitable nozzle according to your need.
4. Turn the wind speed knob back to Minimum, turn off the heating switch and then turn off the power switch after usage
5. Unplug the dryer from the mains, unplug the hose and nozzle, and put the machine and accessories back to box.

Maintenance

1. Please clean the sponge filter by washing or air blowing, be sure to fix the filter again when it's dry.
2. Keep the surface clean and dry, and use a dry and soft cloth to clean the painted surface.
3. Wet cloth with neutral detergent and wipe to remove stubborn stains and dirt.
4. Use only mild neutral detergent.
5. When the carbon brushes run out, please renew the brushes following the guide line in this booklet or consult with the professionals.

Circuit Diagram Parameters

(for H-901T)

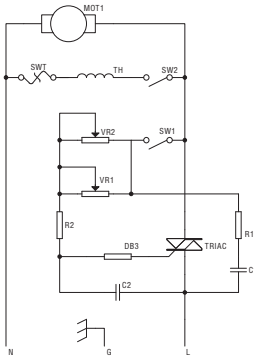
| | | | | |
|--|-------------------|-------------------|--|---------------|
| Product Name | CYCLONE | | Item Number | H-901T |
| Rated Voltage | 220V~240V 50Hz | 100V~120V 60Hz | Blow Force | 605g |
| Rated Current | 8.2A (220V) | 16.4A (110V) | Maximum Wind Speed | 60m/s |
| Maximum Power (220V or 110V) | 1800W | | Minimum Wind Speed | 27m/s |
| Heating Power | 600W | | Noise <small>(on back of the dryer at 0.5m)</small> | 94dbA |
| Maximum Temperature <small>(Environmental Temperature at 32℃)</small> | 52℃ | | Noise <small>(on top of the dryer at 0.5m)</small> | 83dbA |
| Net Weight | 4.3kg | | Gross Weight | 5.1kg |
| Product Dimension <small>(Flexible Hose not Included)</small> | 340×160×210mm | | Packing Dimension <small>(L×W×H)</small> | 450×300×240mm |

Remarks:

1.The parameters are tested with 2.5m long flexible hose and Φ16mm round nozzle.

2.We may not publish formal notice in written form when the parameters changed after new improvements.

3.The manufacturing standards and testing stands subject to TOEX company standard: TXPS-ALPD-0901(T)-2011.



Safety Instruction

1. Pet dryer needs a single outlet which is at least 10A and has ground wire for itself. Please connect pet dryer with a correct outlet and do not share with other appliances.
2. Before switch on or turn off the power every time, please adjust the wind and temperature to the lowest, this can extend the lifetime of the machine.
3. Do not insert pins or any metal things into the clearance of the machine, otherwise that would be easy to get an electric shock and short circuit.
4. Do not use a cloth or bag to stop the diffuser or foam filter; otherwise it would damage the machine.
5. If the machine has been used for some time and a malfunction occurs, you must ask the professional person to repair it. Do not disassemble by yourself.
6. If the power cord is damaged, discontinue use and have repaired by a professional.
7. Please keep children away when you operate the machine.
8. Do not hit the housing with fierce shock or drop the machine from high, which will damage the frame and motor.
9. Cardiopath or people with pacemaker are forbidden to use this machine.
- 10.Please hold the nozzle and hose firmly before turning the machine on, or the hose may wiggle and cause injury.
- 11.Must plug hose into the front cap connector before turning the machine on.
- 12.It's strictly forbidden to touch the components in the front cap connector with hand or any other objects in any situation.